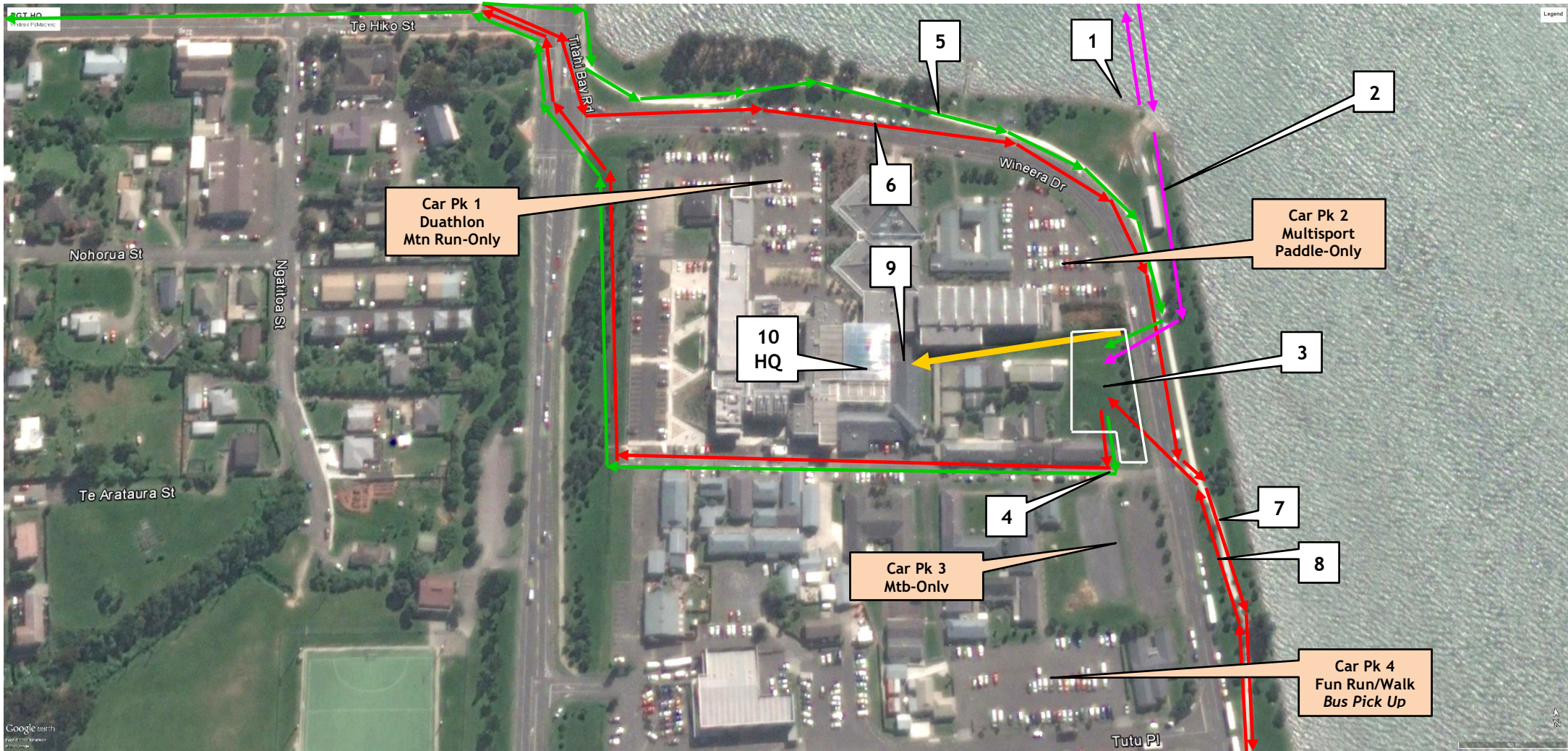


# Porirua Grand Traverse - HQ / Start / Finish / Transitions



## Key

White Box = Transition Area/Bike Racks

Pink = Kayak

Red = Mountain bike

Green = Mtn Run

Yellow = Finish Chute

**NB:** On race day Wineera Dve operates one-way only, using the north-bound road lane only.

1 = Start Line - Multisporters & Paddle Only

2 = Finish/Transition for Multisporters/Paddle Only

3 - Transition Area/Bike Racks

4 = Start of all Mtn Bike & Mtn Run sections

5 - Finish of all run sections, including Fun Run/Walk

6 - Mtb Bikers returning from 1st Takapuwhia loop

7 - Mtb Bikers starting 2nd loop Colonial Knob

8 - Finish of Mtn Bike section

9 - Finish Chute to Finish Line for everyone

10 - Race HQ - Race Pack Pick Up, Briefings, Café, Finish